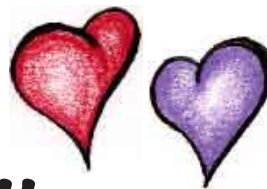




NEW - MORE Circles of Friends...



**If you judge people,
you have no time to
love them.**

Mother Teresa

If we are to achieve a richer culture, rich in contrasting values, we must recognize the whole gamut of human potentialities, and so weave a less arbitrary social fabric, one in which each diverse gift will find a fitting place.

Margaret Mead

You see things and say,
'Why?'
But I dream things that
never were and I say,
'Why not?'

George Bernard Shaw



Creating Circles of Friends A Peer Support and Inclusion Workbook

by Colin Newton and Derek Wilson

Paperback published by Inclusive Solutions, Nottingham, UK,

94 pages, ISBN 0-9546351-0-8 \$25.00

Colin and Derek, educational psychologists in Nottingham City, have recently created INCLUSIVE SOLUTIONS to take their work on the road. Their book shows how building a child's circle of friends can increase their sense of belonging whilst reducing the incidence of disruption. The approach contributes to improved classroom performance and strengthens friendships, personal relationships and growth. Great book - great team!

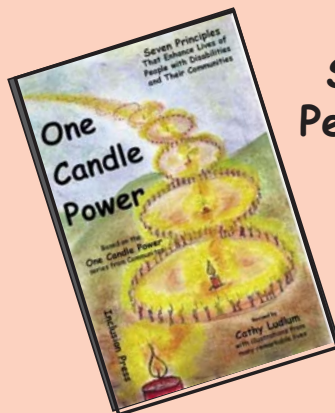
**NEW
BOOK**

INCLUSIVE SOLUTIONS
website: www.inclusive-solutions.com
E-mail: inclusive.solutions@ntlworld.com



ONE CANDLE POWER Seven Principles that Enhance the Lives of People with Disabilities and Their Communities

Revised by Cathy Ludlum with the *Communitas* Team



One Candle Power

The *Communitas* Team wrote 7 booklets on supporting Circles nearly 15 years ago. They were brilliant. At long last, this wisdom has been updated so we can all review the lessons and powerful stories about the complexity and wonder of Circles of Support.

\$25 per copy
plus
shipping/handling
\$5.00 for N.A.

If you have anything to do with Circles, supporting a person, or thinking about long term community options, you need this book.

Call for bulk rates
over 10 copies.

Based on the *One Candle Power* series from *Communitas*

Soon from **Inclusion Press** - watch the web for release date - Fall of 2004...

Still Determined After All These Tears

**A Tale of Tumors, Tragedy and Triumphs
and so much more...(working title)**

by Regina Louise DeMarassé

Regina is a brilliant writer and speaker. She has also experienced institutionalization, tragedy, personal struggles and triumphs. Written with flair, this beautiful journey will touch and illuminate your soul.

And, if you want to know about the impact of
Circles of Support, read this book.



\$25 per copy plus
shipping/handling \$5.00 for N.A. (est)
Call for bulk rates over 10 copies.

If you have anything to do with Circles, supporting a person,
or thinking about long term community, you need this book.

Web: www.inclusion.com

NEW Resources for Person-Centered Planning



Person-Centered Planning with MAPS and PATH A Workbook for Facilitators

John O'Brien & Jack Pearpoint

with contributions by:
Marsha Forest David Hasbury Connie Lyle O'Brien Beth Mount
Judith Snow David & Faye Wetherow

ISBN 1-895418-47-X (2003) \$25.00

This new book was developed over time as a collection of handouts for our three day course teaching MAPS and PATH. Due to popular demand, we have supplemented it and now it is a stand alone workbook to assist facilitators in their learning and implementing of PATH and MAPS processes.

It is excellent for training purposes, students, workshops - as well as an updated person centered planning resource.

This workbook does not replace the PATH manual, but does provide summary introductory information. It is an excellent addition to the resource collection which of course includes the PATH and MAPS training videos.

[PATH is a creative planning tool which starts in the future and works backwards to an outcome of first (beginning) steps that are possible and positive. It is excellent for team building. It has been used to mediate conflicts. It is loved by people who actually want to change the ways we currently work. Groups teaching PATH as a tool will hopefully have a copy for each student. PATH is not for the faint of heart. It is very results oriented.]

Audience: Anyone doing PATH. Relevant for all ages and all populations. Now in use by architects, small business firms, medical professionals, aboriginal communities and organizations, as well as educators and human service providers.

Contents

- Understanding MAPS and PATH
- MAPS and PATH Are Only As Effective As The People Who Use Them
- What Purpose Does Person-Centered Planning Serve?
- How Do You Know It's Person-Centered Planning?
- Solution Circles
- In Case of Emergency
- Take a stretch
- "Will that be the whole cake, or just a slice?"
- Growing Clearer
- The Pushy Part: Closing In On Commitment
- Charting Our Circles of Support
- Participation Through Support Circles
- Increasing the Chances for Deeper Change Through Person-centered Planning
- MAPS and PATH: Differences & Similarities
- PATH Format
- PATH Summary
- Tuning Your path
- Community-Building & Commitment-Building with path 44
- MAPS Format MAPS Questions
- Introductory MAPS learning checklist
- Introductory PATH learning checklist
- Appendix A: A Framework for Our Work Together
- Appendix B: Program Notes for A Master Class Introduction to PATH



Hints for Graphic Facilitators

by Jack Pearpoint

110 pages. Softbound from Inclusion Press (2002), ISBN 1-895418-45-3 \$25.00

Struggling with Graphics? Scared? Want to try but not sure where to begin?

This is the right place. Start here. Simple, user friendly instructions for how YOU can start, and /or improve your graphic facilitation. This is the beginner book hundreds of budding graphic facilitators have been waiting for.

Hundreds of friendly hints from the experienced fingers of Jack Pearpoint.

This book is an introduction to graphic facilitation. If you are curious, nervous, terrified, or even better just want to try graphics on for size, this is the book for you.

The underlying assumption is that we all have this gift, and we just need to remember how we did it when we were children. Thus, it includes beginning steps, and has hundreds of images that you can build on. Most are very simple, but color panels also demonstrate how felt pens and pastel crayons can make everyone's work lively and colorful.

If you are working in Person Centered Planning in its many forms, MAPS, PATH, Circles, and more, and wondering about the graphics you need, you need this book.

You can do this. Get the book. Try it. You'll like it.



Person-Centered Direct Support

Art by Beth Mount - Words by John O'Brien

- 4 minute movie/powerpoint on CD.....\$25.00
- Poster - singles\$5.00
- Poster - bulk Conf. Rates:.....\$ call
(i.e. \$3/copy for 100 bulk)
- NEW BOOK & CD for training -
print your own handouts - See www.inclusion.com
Call: 416-658-5363 inclusionpress@inclusion.com

Order Now: Tools for Change - new CD-ROM



**PERSON-CENTERED DIRECT SUPPORT
foldouts & CD**

Resources to Develop
PERSON-CENTERED DIRECT SUPPORT WORKERS

People who rely on personal assistants need workers who find meaning in offering service in person-centered ways. A sense of meaning increases the chances of retaining workers and an understanding of what it means to work in a person-centred way increases the chances that workers will make a positive difference in the lives of the people and families they assist. Appreciate inquiry into the performance of direct support workers when they are at their best reveals a relationship that engages their hearts, their minds and their hands.

In collaboration with a group of direct support workers in New York City, Beth Mount and John O'Brien identified 12 themes that make a positive difference to quality of life...

Share Life's Journey
Create Understanding
Generate Respect

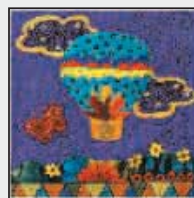
Raise Expectations
Listen with Heart
Build Alliances

Open Choices
Learn the Neighborhood
Let Beauty Shine

Support Voice
Celebrate Community
Nurture Relationships

Raise Expectations

We search out knowledge
that will increase our
idea of what is possible.
We encourage one another
to pursue our dreams.



Discovering these themes inspired the creation of three resources to guide the development of person-centered direct support. They can be used for staff development, conference handouts, staff appreciation, or retreats.

The FOLDOUT/POSTER

The foldout includes 12 color images and a description for each of these themes. The centerfold of the foldout can also be displayed as a poster.

Foldout price: \$5/copy BULK Price: \$3/copy for 100 bulk

The CD - Slide Show Presentation

A slide show (powerpoint and/or quicktime movie) is also available on a CD complementing the foldout. Excellent for Training presentations.

Price \$25.00

A poster of a quilt that brings all twelve themes into a single pattern is available from: www.capacityworks.com



**NEW
BOOK**



**Implementing Person-Centered Planning
Voices of Experience**

edited by John O'Brien and Connie Lyle O'Brien 420 pages, Softbound from Inclusion Press
ISBN 1-895418-50-X published (2002) \$25.00

If you liked "A Little Book About Person Centered Planning", you will love this sequel. Brilliant editing by John O'Brien and Connie Lyle O'Brien ensure that every article is pointed and useful. Wide ranging authors touch on the hard issues involved in implementing Person-Centered Planning on the ground.

Essential as a Teaching Resource. Practical as an organizational ideas bank.

includes articles by the following people:

Pete Ritchie, A Turn for the Better · Connie Lyle O'Brien & John O'Brien, The Origins of Person-Centered Planning · Michael Smull, A Plan Is Not an Outcome · David & Faye Wetherow, Community-Building & Commitment-Building · Beth Mount, John O'Brien & Connie Lyle O'Brien, Increasing the Chances for Deep Change · Steve Holburn, The Value of Measuring Person-Centered Planning · David Pitonyak, Opening the Door · Mary Romer, Two Is Not Enough · Steve Holburn, The Weird Guy · John O'Brien, Great Questions and The Art of Portraiture · Beth Mount, The Art and Soul of Person-Centered Planning · Jo Krippenstapel, The Rhode Island Facilitators Forum · Mary Jo Almina Caruso & Kathy Lee, Some Words



If you don't have it... the first in the series...

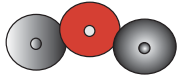
**A Little Book About
Person-Centered Planning**

Editors: John O'Brien and Connie Lyle O'Brien

Along the Way · Michael Smull, Helping Staff Support Choice · May-er Shevin, Communication Ally · Karen Green McGowan, Getting Beyond Sick · Susannah Joyce, Mutual Learning: Involving People Who Use Mental Health Services · Sally Shemsdorf, Sequoia: Planning with Senior Parents · Connie Lyle O'Brien & Beth Mount, Pathfinders: Transition to Adult Life · Connie Lyle O'Brien & John O'Brien, Large Group Process for Person-Centered Planning · Debra McLean, A Simple Half-Hitch · Anne O'Bryan, Vocational Profiles · Jack Pealer & Sandra Landis, Some Beginnings · Michael Smull, Thinking About Support Broker Roles · Helen Sanderson, Person-Centered Teams · Pat Fratangelo & Jeff Strully, The Challenges of Person-Centered Work to Agency Leaders · Martin Routledge, Helen Sanderson & Rob Greig, Planning with People: A National Strategy

NEW DVD's

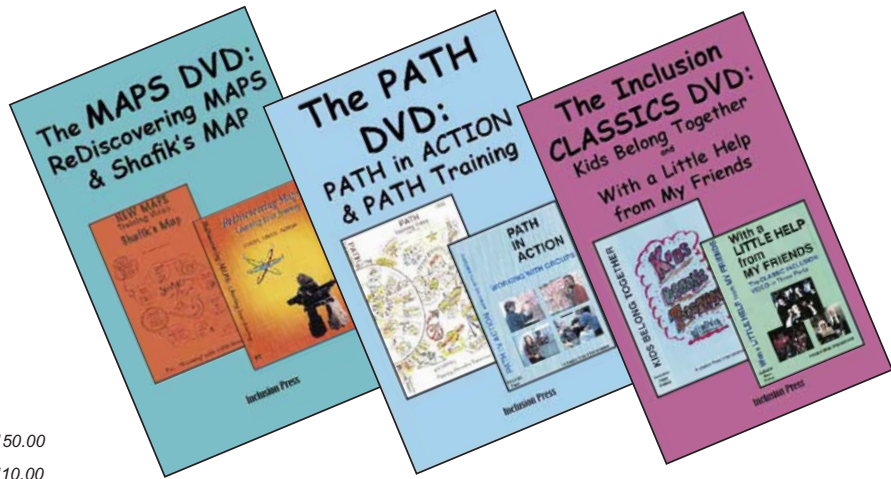
- The MAPS Collection
- The PATH Collection
- Inclusion Classics



Interactive Media Presentations on DVD's - organized so you can choose the section you want to see. See the MAPS, PATH training 'video's' in a format you can control. Ideal for training. Works on your DVD player - computer or TV.

Price: MAPS DVD and PATH DVD - \$150.00

Inclusion Classics DVD - \$110.00



Coming Soon - a NEW Look to our web page....

Together We're Better • All Means All • Inclusion Means WITH - Not Just IN



INCLUSION PRESS
Person Centered Planning
and Resource Material

INCLUSION NETWORK
Workshops and Training Events
for Inclusion

MARSHA FOREST CENTRE
Inclusion • Family • Community
PlayFair Teams

WORKSHOPS • BOOKS • VIDEOS • RESOURCES • INCLUSION • NEWSLETTER

Jack Pearpoint & Cathy Hollands, Inclusion Press International & The Marsha Forest Centre
24 Thome Crescent, Toronto, ON M6H 2S5 Canada

Phone: (416) 658-5363 Fax: (416) 658-5067 Email: inclusionpress@inclusion.com

Inclusion Press in Australia - Ally Inclusion -

We are delighted to introduce Alana Baker - Ally Inclusion - our new distributor in Australia. This is a new business venture for Alana and we wish her well. She wants her customers to know that she prefers e-mail contact - and looks forward to serving you well. Alana's e-mail:

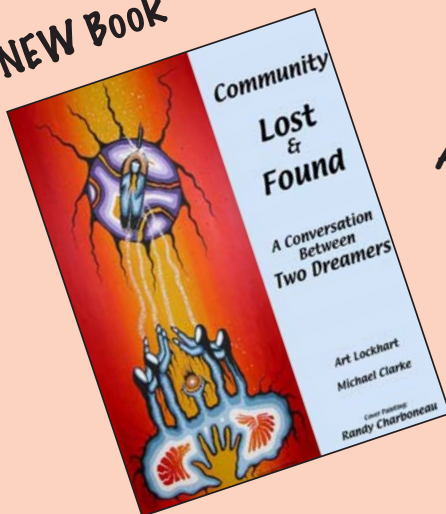


alana_baker24@yahoo.com.au



Soon from Inclusion Press - watch the web for release date - Fall of 2004...

NEW BOOK



Cover Painting
by Randy Charboneau

Community: Lost & Found

A Conversation Between Two Dreamers
by Art Lockhart & Michael Clarke

Stories about community organizing - about building community - stories from the street. If you are struggling with community violence, dropouts, street kids, homelessness, violence, abuse - read about how Art and Michael have created new positive choices for people by organizing the community, the street - us. Art and Michael have years of 'street smarts' which they share in readable form. They are leaders in Restorative Justice. You will love their spirit - their hope - as they tackle complex messes and create positive options. A must for people searching for better ways to create healthy communities - with spirit.

\$25 per copy plus
shipping/handling \$5.00 for N.A. (est)
Call for bulk rates over 10 copies.

Order Now: Tools for Change - new CD-ROM